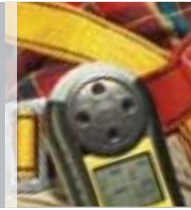


# Minimax X4

RABCO Sales (800) 237-2467  
(203) 230-1693



## Tough Durable Housing

- Small and lightweight
- Rugged, impact and weather resistant
- Includes crocodile clip - clips anywhere to prevent accidental loss

## Easy to Use

- Works straight out of the box
- Single button on/off operation
- Intuitive icons suitable for all languages
- User configurable via menu
- Interactive product training guide available

## Ultra Clear Backlit Display

- Unique 'flip display' at the press of a button
- Continuous reading of gas levels
- TWA/STEL and two instantaneous alarm levels with peak hold facility
- Battery life, calibration and self-test status

## Effective Gas Alarm Indication

- Alarm and backlight combine to demand attention
- Distinctive loud two-tone audible alarm
- Vibrating alarm supplied as standard

## Reliable Operation

- Self-test on start up or on demand checks display, battery, sensor, audiovisual and vibrating alarms
- Uses patented SureCell™ sensor technology and Reflex™ cell check technique
- Includes TemptraSURE™ thermal compensation and shock protection
- Periodic flash and/or beep for increased confidence (user configurable)

## Unsurpassed RFI Performance

- Can be used alongside walkie-talkies or cell phones
- Exceeds the toughest industrial standards for RFI immunity

## Cost Effective

- Fully inclusive 2 year warranty
- Minimum 2 year sensor life
- Initial and on-going running costs minimized
- Available in 1, 2, 3 or 4 gas versions

**Minimax X4 is an unsurpassed portable gas detector for protection against flammable, oxygen, carbon monoxide and hydrogen sulfide gas hazards. It's ideal for use by those companies wanting advanced performance, reliability and ease of use without high costs of long term maintenance.**

Minimax X4 focuses on ease of use by offering only the functionality required to comply with legislation. Everything that a user ROUTINELY HAS TO DO can be achieved with a single button press! Keeping it simple reduces training requirements and enables use in a wider range of industries.

Ease of use doesn't mean basic functionality. For example, every instrument has the capability to log data using a simple to fit memory card (the type you get in a digital camera). Events, gas data and the calibration history are all stored and the free software downloaded from our web site enables you to graph or print reports at the press of a button.

Convenience and the way users want to work is an important consideration. When clipped to the belt or harness users may want the re-assurance of being able to view the display from different positions. But with many other units the display is upside down forcing the user to remove the unit to look at the display, perhaps creating a hazard. With the Minimax X4 users can 'flip' the display at the press of a button for that added convenience and safety.

With an ultra clear backlit display, vibrating and powerful audiovisual alarms, the Minimax X4 demands attention when gas hazards are detected in even the most adverse working conditions. All in all, Minimax X4 offers reliable, easy to use gas detection to keep you safe.



# General specification



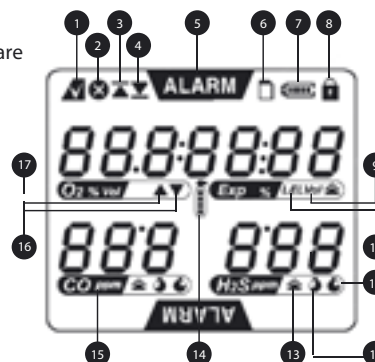
Standard Specification					
General					
Reusable multi-gas detector for personal protection against flammable, toxic and oxygen gas hazards. Supplied complete with calibration certificate, quick start guide, alkaline batteries (2), tubing, flow adaptor, crocodile clip, and manual.					
Gases Detected	Range	Alarm Set Points <sup>#</sup>			
		Level 1	Level 2	STEL	TWA
Flammable (Exp)	0 to 100% LEL*	10% LEL	20% LEL	n/a	n/a
Oxygen (O <sub>2</sub> )	0 to 30% vol	23.5% vol	19.5% vol	n/a	n/a
Carbon Monoxide (CO)	0 to 999 ppm	35 ppm	100 ppm	100 ppm	35 ppm
Hydrogen Sulfide (H <sub>2</sub> S)	0 to 250 ppm	10 ppm	15 ppm	15 ppm	10 ppm
* Flammable channel can display gas concentration in %vol units for a range of flammable gases. # User configurable.					
Sensors					
Patented Surecell™ electrochemical and catalytic bead sensing technology for stable and reliable performance in all industrial environments.					
Diagnostics					
Self-test of circuitry, battery, LCD, and sensors on start up or on demand. Patented Refixcell check techniques included as standard for toxic channels.					
Display					
Ultra clear icon driven backlit LCD displays gas level and detector status. Unique 'flip display' function at the press of a button for added user convenience. High/Low Peak hold facility included with user clear. Time and date.					
User Interface					
Intuitive three button operation for detector configuration.					
Audible Alarm					
90 db @ 30 cm					
Visual Alarm					
High intensity red LEDs combined with red backlight for maximum effect.					
Vibrating Alarm					
Supplied as standard.					
Operating Temperature					
-20°C to +50°C (-4°F to +122°F). TempraSURE temperature compensation.					
Humidity					
5-95% RH (non-condensing).					
IP Rating					
Ingress protection to IP65.					
Approvals					
North America: Class I, Div 1, Groups A, B, C, D T4. Europe: ATEX II 2G EEx ia d IIC T4. (specific version only) Canada: certified to CSA C 22.2-152 and CSA C2.					
RFI/EMC					
CE EN50270:1999 and EN55011.					
Sensor Life					
Minimum of 2 years backed by inclusive 2 year warranty.					
Battery Life					
14-16 hours with 2 x AA Alkaline batteries. 12 hours of operation per charge, minimum, with rechargeable NiMH batteries. Low power audiovisual warning.					
Dimensions					
124 mm(H) X 76 mm(W) X 36 mm(D).					
Weight					
210 g (without batteries), 258 g (with batteries)					
Warranty					
2 years					

\* Oxygen detection products must only be used to detect oxygen depletion in air.

## Optional Accessories

- Field case
- Belt clip
- Hand aspirator kit with inline filter
- Tubing (2 m/6')
- 1 m (3') sample probe
- 10 m (30') sample tubing with ball float
- Calibration gas (Balanced Air, CH<sub>4</sub> 50% LEL, CO 50 ppm, H<sub>2</sub>S 25 ppm)
- 0.3 L/min flow regulator
- Spare memory card for data logging (Refer to the manual for acceptable models and part numbers)
- Desktop USB memory card reader
- Data log graphing and reporting software
- Interactive training guide CD
- Data logging kit
- Confined space kit
- Calibration kit
- Bump Test gas cylinder
- NiMH Battery and AC charging kit
- Vehicle Charging Kit

## Display Details



- 1 Test Pass Icon
- 2 Test Fail Icon
- 3 High Peak Icon
- 4 Low Peak Icon (for O<sub>2</sub> only)
- 5 Alarm Icon
- 6 Data Logging Icon
- 7 Battery Icon
- 8 Pass Code Protection Icon
- 9 %Vol Unit Icon
- 10 %LEL Unit Icon
- 11 STEL Icon
- 12 TWA Icon
- 13 Alarm Level 1 Icon  
Alarm Level 2 Icon  
(for flammable and toxic)
- 14 Calibration Icon
- 15 Gas Label Icon
- 16 O<sub>2</sub> Deficiency Alarm Icon
- 17 O<sub>2</sub> Excess Alarm Icon